



دوره ی آموزشی CATIA مقدماتی

مهدی متقی پور

عضو هیأت علمی دانشگاه صنعتی شریف

Www.sharifcadcam.ir

Sharifcadcam@gmail.com

@sharifcadcam

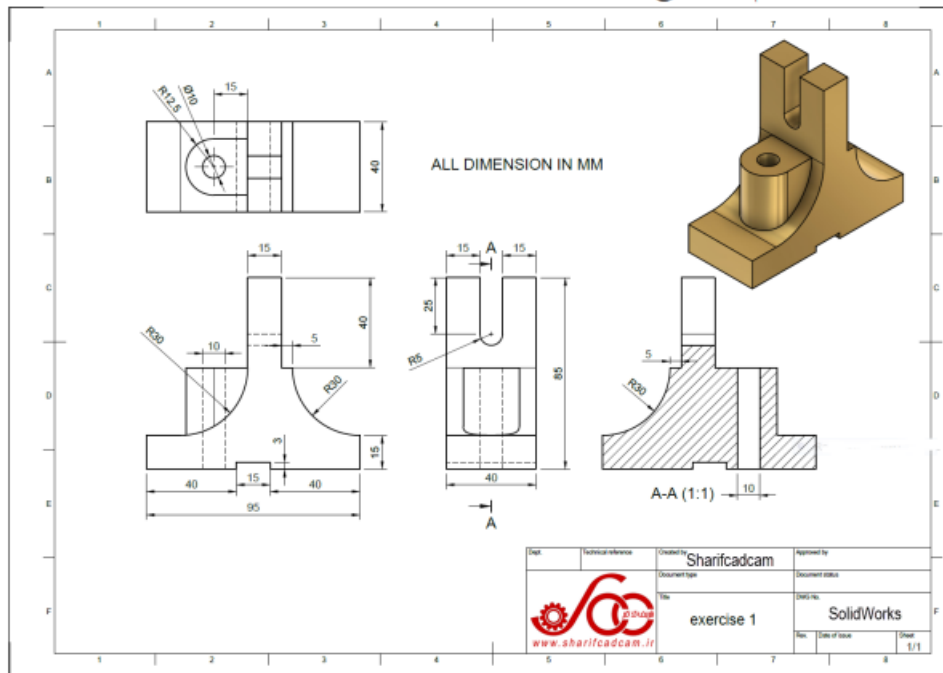
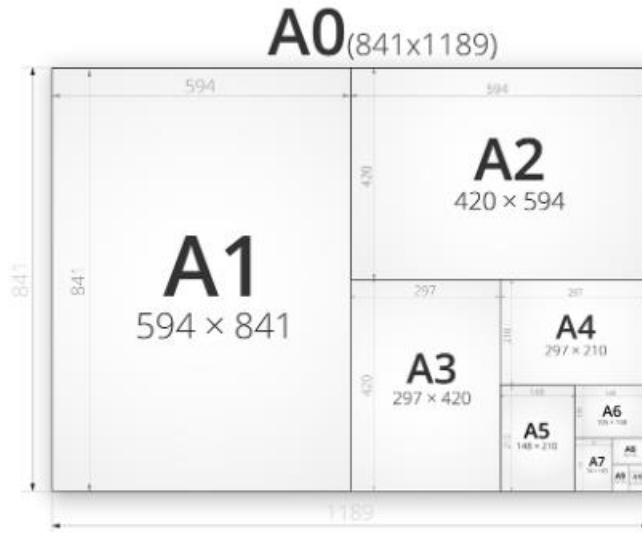
021-66980854

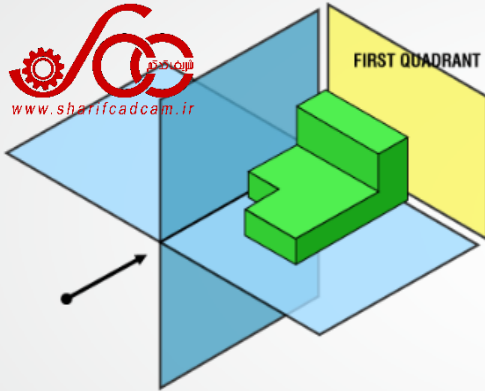
021-66980926

این جزوه متعلق به موسسه شریف کد کم می باشد. کپی و نشر تمام و یا بخشی از آن غیر قانونی است.

تنها افرادی مجاز به استفاده از این جزوه هستند که دوره آموزشی کتیا مقدماتی را از سایت sharifcadcam.ir خریداری کرده اند.

جزوه جلسه چهارم



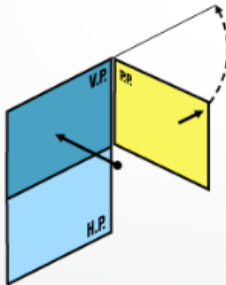
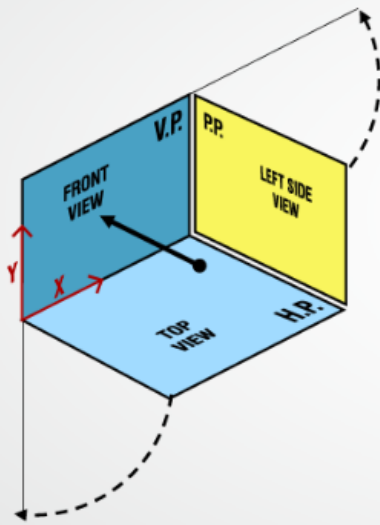
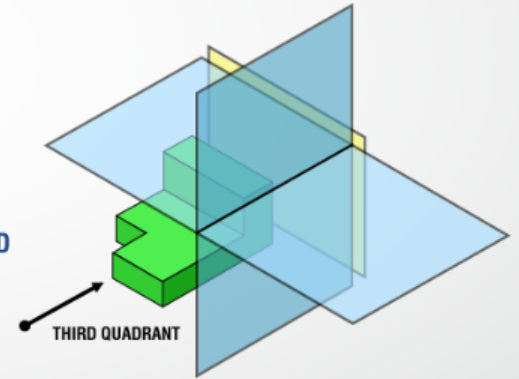


FIRST ANGLE SYSTEM

- EUROPEAN COUNTRIES
- ISO STANDARD
- PLANES ARE OPAQUE

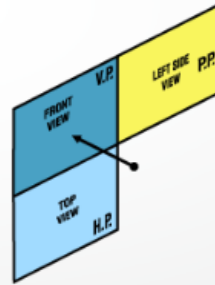
THIRD ANGLE SYSTEM

- CANADA, USA, JAPAN, THAILAND
- PLANES ARE TRANSPARENT



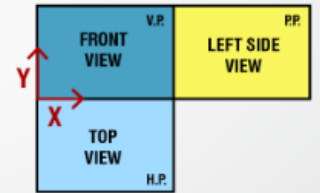
STEP 1

HP IS ROTATED 90° DOWNWARD



STEP 2

PP IS ROTATED 90° IN RIGHT SIDE

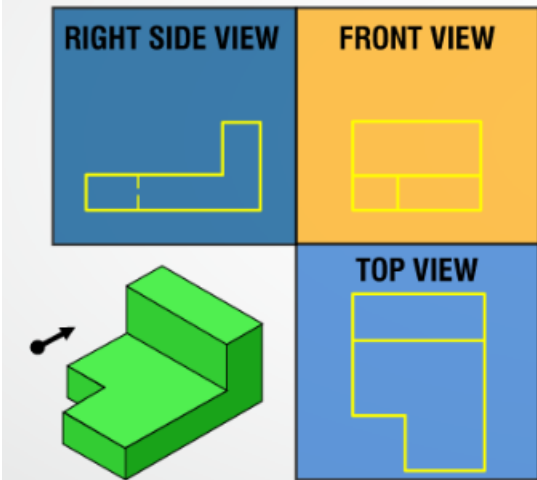


THIS WAY BOTH PLANES ARE BROUGHT IN THE SAME PLANE CONTAINING VP.

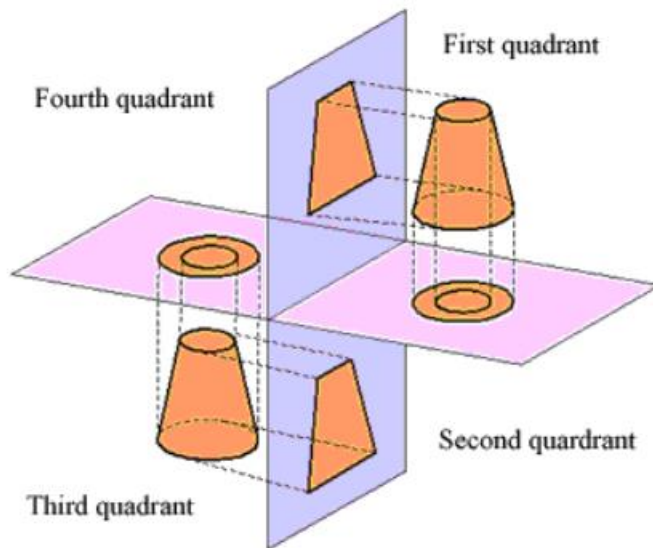
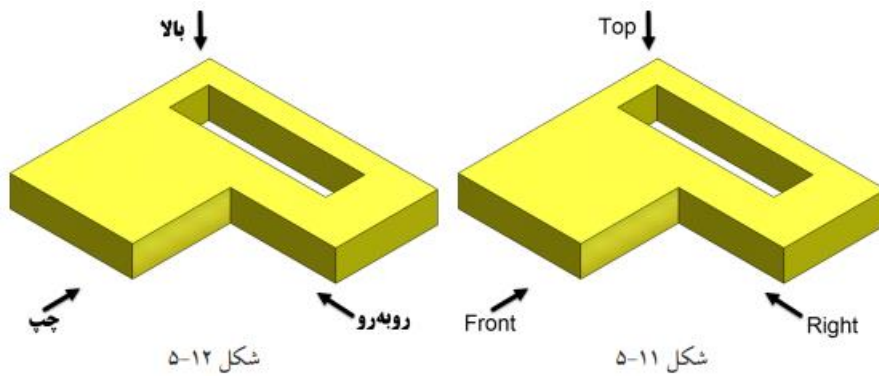
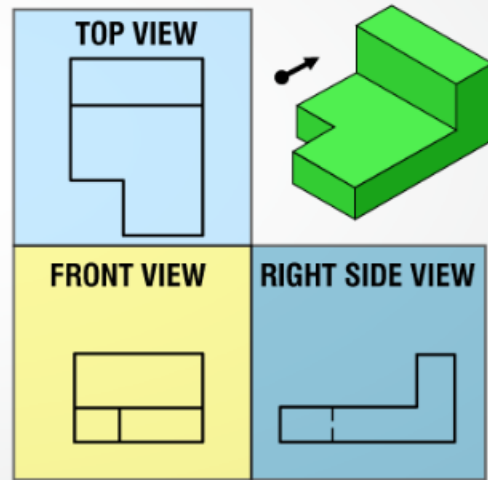
- CONSIDER THAT THE ARROW DIRECTION IS THE NORMAL DIRECTION OF OBSERVING THE OBJECT.
- BUT IN THIS DIRECTION ONLY V.P. AND FRONT VIEW ON V.P. CAN BE SEEN.
- THE OTHER PLANES AND VIEWS ON THOSE CAN NOT BE SEEN.

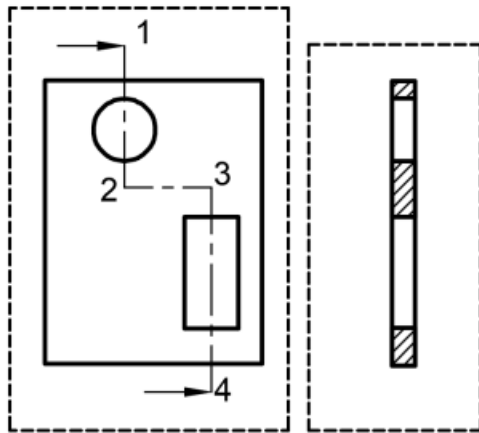
TO MAKE THOSE PLANES ALSO VISIBLE FROM THE ARROW DIRECTION:

FIRST ANGLE SYSTEM

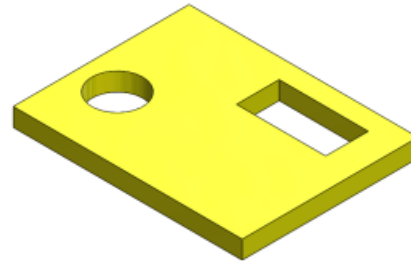


THIRD ANGLE SYSTEM

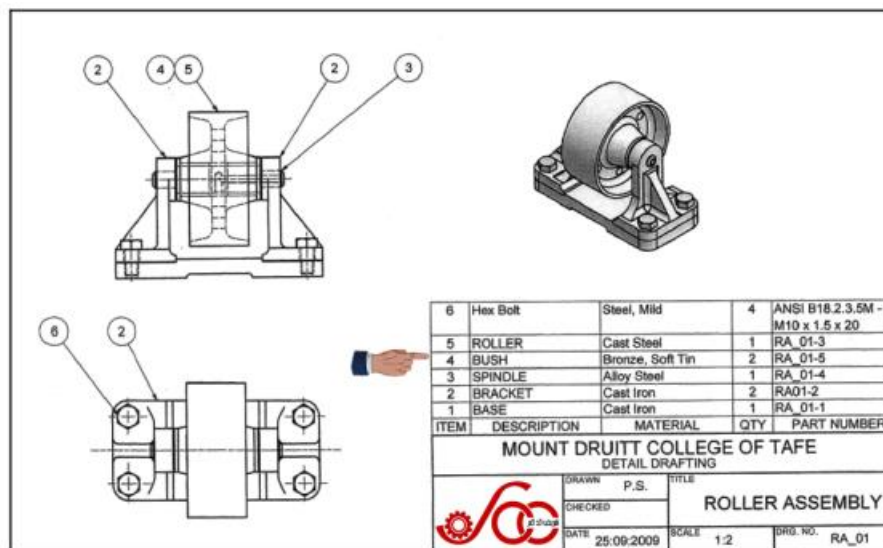




شکل ۵-۲۷



شکل ۵-۲۶



6	Hex Bolt	Steel, Mild	4	ANSI B18.2.3.5M - M10 x 1.5 x 20
5	ROLLER	Cast Steel	1	RA_01-3
4	BUSH	Bronze, Soft Tin	2	RA_01-5
3	SPINDLE	Alloy Steel	1	RA_01-4
2	BRACKET	Cast Iron	2	RA01-2
1	BASE	Cast Iron	1	RA_01-1

ITEM	DESCRIPTION	MATERIAL	QTY	PART NUMBER
MOUNT DRUITT COLLEGE OF TAFE DETAIL DRAFTING				
DRAWN		P.S.		
CHECKED		TITLE		
DATE		SCALE		
25.09.2009		1:2		
		DRG. NO. RA_01		

